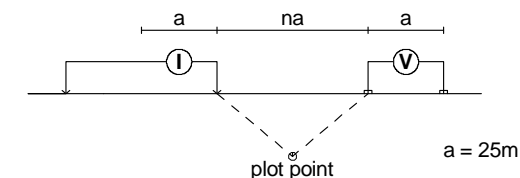


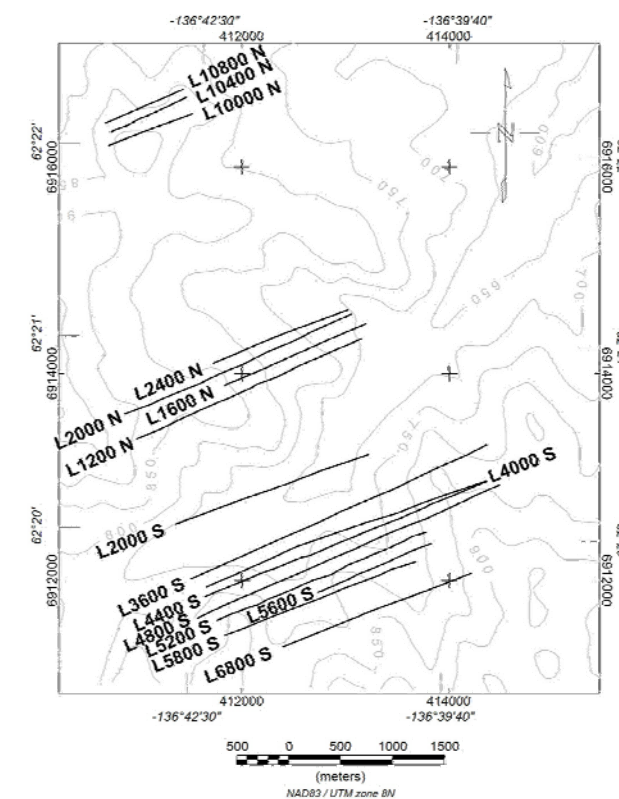
## STACKED PSEUDOSECTIONS MAP APPARENT CHARGEABILITY

Modified Pole-Dipole Array



L10800N Stationary electrode at West end of line.  
L10400N Stationary electrode at West end of line.  
L10000N Stationary electrode at West end of line.

Receiver: Iris ElrecPro  
Transmitter: GDD Tx-II 3.6kW  
Data File: all lines 25-final.gdb



WESTERN COPPER CORPORATION

INDUCED POLARIZATION SURVEY

CARMACKS COPPER PROJECT

APPARENT CHARGEABILITY - 25m DIPOLES

STACKED SECTIONS - ZONE 2 LINES

Mining District: Whitehorse

Datum: Local Grid

NTS: 115 I/07

Drawn by: HS

Job: WRN-7506-YT

Date: 17 Jan 08

AURORA GEOSCIENCES LTD.